

Prayer Space

Lord Jesus Christ
You said

May they all be one, just as, Father,
You are in me and I am in you.
So that the world may believe
It was you who sent me.

Dear Lord, bring together in love and
peace all who believe in You.
Amen

Basil Hume

Lead us, Father, along the paths You choose for us, what-
ever they may be. Help us to realise every day that you
do not slumber or sleep and that You will not allow our
feet slip. We thank You for Your wisdom in leading us.

Corrie Ten Boom

"Alone with none but thee, my God,
I journey on my way:
What need I fear, when thou art near,
O King of night and day?
More safe I am within thy hand,
Than if a host did round me stand...

The child of God can fear no ill,
His chosen dread no foe;
We leave our fate with thee, and wait
Thy bidding when we go.
'Tis not from chance our comfort springs, Thou art our
trust, O King of Kings.

From The Awesome Journey -
Life's pilgrimage by David Adam"

A word from the Rectory

Last month we started on our 'Roadmap out of lockdown' in the Cowley Team Ministry. It has proved an exciting time. Our numbers attending Sunday worship have been slowly, but safely, increasing. Other activities have re-started.

- We held a bric-a-brac sale in the Rectory front garden and the carpark. It raised £114 of much needed funds and a good deal of cheer! Alongside we had a Churchyard gardening party which tackled some of the 'perennial problems- Overgrowth and the need of trimming and tidying.
- Mondays and Tuesdays have seen the restarting of our beloved toddler groups Little Stars and Seashells. Yes, we have had intentionally small numbers, but this has brought such cheer to those who have attended.
- Thursday afternoons we have hosted some teas and coffees in the Rectory garden. Again, intentionally small numbers of those who have struggled to get out. But great - even when the vicars Victoria Sponge was a little underwhelming!
- We have held our first wedding since lockdown with 15 guests and some beautiful weather. As always God was good. Our funeral services have continued. We are so thankful for the small band of singers and musicians, who make up Cowley Worship Band. They have been so sustaining over the last months. The funeral families and our regular congregations have been so blessed by them.
- Over Easter we held some wonderful services. Some in the churchyard at St James. And yes, we were allowed to sing again!

So, what will the road ahead look like? It will be a slow and steady journey back to the 'new normal'. There remains a lack of clarity of detail but here are some hopes and dreams! Our next key date seems to be May 17th.

At this time, it is hopeful that the numbers for Rectory Teas will be able to increase. As will the numbers for Little Stars and Seashells.

Pentecost: We are hoping to hold an outdoor service in St James Churchyard. This will be a bit of a landmark. With increasing commitments throughout the week, it will mark a transition away from the pre-recorded Sunday Services. We will continue to record, stream, and place on DVD, the live services. It is thought that the Sunday after Ascension (May 16th) will be the last pre-recorded service.

Getting back to weekly main morning services at both St Francis and St James. We are all looking forward to this. Indeed, as I write I think about the joy of us being able to gather in the way we have so enjoyed in past summers. We have tentatively put a date of June 27th in our diaries. But that may need to be reviewed. It is possible we will need to make this step earlier.

Revd Gemma moving on to new pastures! We have all been aware that Revd Gemma will need to move on to take up a post as incumbent. Her last Sunday with us will be the 13th of June. She will then take a bit of annual leave and attend a farewell tea party in the Rectory Garden on Saturday 26th June. It is hoped that Revd Richard Chand, and our dear friend, and Musical Wizard, Brian Tidy will be able to join us on that day. If you would like to contribute to a farewell present for Revd Gemma, please pass it to Geoff, Christine Woodman, or Joan Coleman!

Service times and lay ministry: We have,

From the Editors

Sally Hemsworth and Nicki Stevens

Another month has passed and we are now into May. The garden has suddenly come to life with lots of blossom (and dandelions!) and it looks as though things are opening up slowly for us all. We certainly have some lovely things to look forward to – the Plant Sale, Quizzes, Parish Walks – and hopefully day trips by coach, even if a Parish Holiday is not possible this year. We look forward to hearing more from Pat about these.

What good news about the new large projects at St James Church. We have permission to do them, we have collected lots of money via personal contributions and grants – but we have a way to go before we can actually ensure we can go forward. Knowing this Parish, the projects will soon be going ahead.

Joan has given us more advice on growing sunflowers – and if the ones you were given have not taken, the advice is “buy some already growing from the Plant Sale”! We do hope, however, that your plants are growing “nicely” and you are tending them regularly – a bit cold to plant them outside yet though.

We would like to pay tribute to the late Duke of Edinburgh who has died since the April edition of The Chronicle. It is amazing to hear of all the good things he has done over the last 70 years for the Queen and this country, and the legacy he has left is such a great one.

Look forward to more articles from you – love to receive them so please do not be “shy” about putting your thoughts on paper.

Sally and Nicki

over these past weeks, been having some conversation about service times. Following some survey work there is a suggestion that we move to a new pattern: an 8 am at St James, a 9:30 at St Francis and an 11 am at St James. This will allow a reduced sized ministry team to cover services at both ends when needed. Your thoughts would be appreciated.

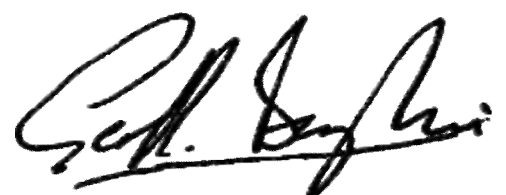
Lay worship leaders: We have been training up some worship leaders who will become active in the coming months. They will be involved in many areas of our services, including the early parts of liturgy. We are very thankful for their offer.

An addition to the Ministry Team: I am delighted to be able to announce that Bishop

Steven has agreed to our brother Revd Max Dias Butron to be licensed to us as a Self-Supporting minister (SSM). He has been working with us over past months and it brings joy to my heart that we can formally recognise his role. He will continue to work in the hospitality industry and is most likely to appear at our 8 am services.

As we approach Pentecost, the birthday of the Church, we do so with confidence. God is Good and Christ is risen. By his hand we will rise into this new normal and give thanks. May God be with you each day!

Amen



RECIPES

Michelle's Truffles

Extract from the SeeSaw
Calendar for 2021

Grief support for children
and young people in Ox-
fordshire



This recipe makes 16 truffles

Grab a bowl and roughly chop 225g dark
chocolate (70% cocoa) into it

Pour 120ml double cream in a small sauce-
pan, bring to a simmer over low-medium
heat.

Pour the cream over the chocolate, drop in a
few drips of vanilla essence, let sit for a cou-
ple of minutes. Stir the mix until smooth.
Cover with lid or cling-film and chill in the
fridge for 1 hour until set.

Using an ice cream scoop or a spoon, scoop a
small portion of the chocolate mixture and
form small balls by rolling between your
hands. Arrange the balls on a baking sheet or
a big plate and pop back in the fridge for 30
minutes. Roll again between your hands to
create smooth balls.

To decorate the truffles, you will need cocoa
powder, icing sugar, melted dark and white
chocolate:

Roll 4 of the balls in cocoa powder, 4 of the
balls in icing sugar, dribble 4 of the balls with
melted dark chocolate and finally 4 in melted

white chocolate. Pop them into small paper
cases. Lovely as a gift for someone special.

Best served with a hot coffee latte and let the
Truffle melt in your mouth.

Shaun Guard
**TV
AERIAL
SERVICES**

- Poor reception solved
- Aerials - supplied & repaired
- TV's - hung on your wall or set up & tuned
- Internet - extension points & improved wifi
- Extra TV Points - for aerial and Sky (also in HD)
- Sky TV - also foreign language satellite

OXFORD AERIALS

www.oxfordaerials.co.uk
Call Oxford
01865 400141

Caring & professional

Foot Health Practitioner

Routine nail trimming; corn & hard skin re-
moval; diabetic foot care and advice; mildly
ingrown, thickened and fungal nails

Home Visits or clinic appointments -
Full PPE- sterilised instruments -
insured & DBS checked

Kate Reid MCFHP MAFHP
07952127534

kate@nurturefootcare.co.uk

CHILDREN'S CORNER

I love cooking. My interest probably started when I was very young and it was usual for us to make about 6 Christmas puddings for ourselves and relatives. We needed a very large mixing bowl to make them in before putting the mixture into basins. It was expected that all of us in the family would help to mix the currants and other fruit with loads of other things. The mixture smelled lovely. In those days we boiled the puddings for five or six hours. The only vessel large enough was the gas washing boiler and it needed to be topped up with water during the day.

The Christmas cake was also made at home but usually that was made by mum alone because she would have the opportunity to do all sorts of things that we youngsters were not allowed to do, and she added her 'secret ingredient'. It seemed to make the cake taste different to the Christmas Pudding, yet she said the ingredients were the same. Of course, the real reason that they were so different was that the mixture had more of some things in the pudding to the amount of the same things in the cake. But the 'secret ingredient' always worried me. I think it might be that she added something from a small locked cabinet when we weren't looking! My grannie never used ale (beer) in her puddings because she never drank alcohol, but she still made the darkest puddings I ever saw. (I think her 'secret ingredient' was chopped prunes because they had the same effect as having a portion of her pudding) with custard, of course.

As you grow up life changes and so did the family, and the way we prepared our meals. Time spent on some things when I was young, like lighting the fire on Saturday mornings or meeting the milk man with a large jug to buy our milk from his mobile horse and cart have changed to making certain that the central heating is properly adjusted or buying the milk in cartons from a large supermarket. Recipes change over the years and we use machines, but the 'feel' of making a pastry mixture or dough is special and the kneading is so important.

One of our great friends was a master baker and made bread as well as cakes. He worked for one of the large restaurants in Oxford and was famous for his special wedding cake mixture and made the most fantastic pies. I helped my mother sometimes with pastry making but could never get things quite right. One day I asked him what his 'secret ingredient' was, and he told me. If you make pastry most people, and all the ladies at my church at that time, said that you should only use the best PLAIN flour that has no raising agent. (You use special Strong flour for bread and self-raising flour for cakes). Don't listen to them he said. I use one part of self-raising flour to six parts of plain flour and about one third fat of the total weight of flour. This will give you a very light pastry, and if you use butter instead of margarine/lard plus a whisked egg, with a small amount of milk to mix the dough, you will have a prize-winning pastry for all types of cooking. Naturally you can add a small amount of sugar for a pastry dessert or fruit pie.

So my friend's secret ingredient was now mine as well. And you can share it with me. You don't have to keep *all your secrets* to yourself but sometimes the real secret is just being yourself. You are special because there is only one person like you, and the way you live IS special. People know that if we are doing something, we will only try to do it the right

way and properly. And who knows, they might even learn the secret of what makes our work or way of life so special, because we know we have that 'secret ingredient' and tried our best. It may not always turn out to be perfect, but we can try. Till next time, be good.

Uncle Ben

Parish Walks

Parish Walks recommenced on the 19 April with a walk to Iffley and through Iffley Fields where we saw many fritillaries – what a lovely sight on a sunny day. We ended by having ice-cream/ coffee at the shop at the corner of Meadow Lane lazing in the sunshine!

Our next walk is on Monday, 10 May 2021, when we are meeting at St Francis Church at 2 pm and walking to Brasenose Woods to see the bluebells. Just come along if you want to join us – we will need to walk in groups of six to meet the regulations, but we can still enjoy the bluebells.

Sally Hemsworth



Supporting you through everything

Whether you are a home user or a business, the largest independent computer support company in Oxford is here for you.

01865 717088  **Computer Assistance**

shop@computerassistance.co.uk

CHRISTIAN AID

With every gift, with every voice, with every prayer, with every action, we stop this climate crisis.

Our planet is changing, but some people are feeling the effects of this more than others. Weather extremes are now more frequent and more intense due to the climate crisis and one place that has experienced this is Kenya.

In parts of Kenya in 2020, drought was followed by relentless rainfall and flooding, which damaged crops that had struggled to grow. Together, the climate chaos and coronavirus are a double threat to lives and livelihoods.

Climate chaos is causing a hunger crisis

In Kitui, eastern Kenya, 8 out of 10 people depend on rain to grow crops. Without water, staple crops like maize and beans wither up and die. People can't earn a living and they go hungry.

People are forced to walk further and further to collect water. This daily burden robs them of the chance to farm and grow food for their families. Elderly women and children are especially vulnerable on these dangerous journeys and can face robbery or conflict as people battle over scarce resources. Cows, sheep and goats are becoming weaker and weaker. They can't produce milk or be sold. People are struggling to cope. Lives are at risk. Families need every last drop to survive this climate chaos.

Christian Aid has been working in Kenya since 1997. One of our long-standing partners in Kenya is Anglican Development Services – Eastern (ADSE). Christian Aid and ADSE are working together with communities in Kitui county to help them to adapt to drought as well as flooding, as climate chaos robs people of control over their lives.

ADSE helps communities build earth and sand dams, and rock catchments, so they can harvest water near their homes. Dams are simple and cost-effective natural storage solutions. They catch the rain when it falls, increase the amount of stored water available to communities, defend against intense rain and flooding, and free women and girls from making long and dangerous journeys to collect water.

Meet Rose: a loving, hard-working grandmother

One woman who is experiencing the worst of the climate crisis is Rose. A grandmother, Rose is an experienced village leader. She is proud to be able to cover the costs of her grandchildren's education by working as a casual labourer.

After her husband died in 2006, Rose began to feel ill. She went to hospital and was diagnosed with HIV. She says: 'My faith has helped me to accept my status and I believe that, with the doctor's advice, I will live a long life.' The medication Rose takes requires her to eat a balanced diet, but because of the long journeys to get water, she can't farm the vegetables she needs and she goes hungry.

In this desperate climate chaos, Rose battles to bring water home for her grandchildren. Every morning, after nothing to eat, she sets out on a long, dangerous journey, walking six hours to collect water.

While she walks, her stomach gives her stabbing pains. She feels weary under the hot sun and the full jerry cans are heavy (40 litres of water weigh 40kg). Her aching legs walk on, because if she gives up, her grandchildren will suffer hunger and thirst. 'We have to walk long distances. We are suffering,' she says.

Rose needs every last drop to survive the climate chaos

Rose remembers her childhood when the rain was reliable and there was plenty of food. She wishes her grandchildren could have the same lives; instead, she hopes that her sacrifices will give them the chance of a better future. But the climate crisis is driving her to the brink. When she arrives home, exhausted, her grandson Charles cooks her a meagre bowl of porridge – but he knows she is still hungry.

But it shouldn't have to reach this breaking point.

There is a nearby earth dam just minutes away from Rose's home. It should be a lifeline. But it's not wide or deep enough for everyone's needs. It runs out of water too quickly.

Rose and her community need a bigger dam, to help them capture the rainfall and create a long-lasting source of water for their families.

A song of hope and power

What happens when the search for water does not consume people's lives? What happened when people have the water they need to thrive?

We can find out by meeting Florence: a woman who has transformed her life with access to a dam full of water.

Florence is a soulful, joyful woman: full of life, love and laughter. The women in her farming group look up to her. She's courageous and kind – a survivor.

A few years ago, her husband died, leaving her a widow. At that time, she had no water to grow crops. Her children were hungry. Like Rose does now, she had to walk for hours to collect water. 'Life was miserable,' she told us.

Florence could easily have been defeated. But she is a fighter. With help from Christian Aid's local partner, Florence and her community were able to build a dam together, just 30 minutes from her house.

Using water from the dam, Florence grows tomatoes, onions and chillies on her farm. Her children can eat healthy, nutritious vegetables, and she has enough left to sell. It's her source of life and joy.

Florence also uses the dam to keep bees: the microclimate of plants growing around the dam means the bees don't need to search long distances for nectar. She sells the rich, golden honey at the market.

She says: 'I have been sustained by the earth dam. My life has changed. I am very happy. You can see it in my face: my face is shining. I have strength and power.'

Blessings for all in need

You can see Florence's strength and power as she hauls heavy buckets to water her crops. You can see her strength and power as she sings to encourage the women with whom she farms.

You can see her strength and power as she takes climate justice into her own hands.

Florence is a generous woman of faith. She knows others are struggling to cope without a reliable water source, and wishes the same blessings she has received will be granted to them: 'There is a village nearby – they don't have an earth dam. They are suffering. I am thankful to people who have donated to build this earth dam. I am praying God will increase their giving.'

This Christian Aid Week, will you stand with people like Rose and Florence?



Please donate this Christian Aid Week (10-16 May). Your gift could help a community build an earth dam, providing a regular and reliable source of water in affected areas of Kenya.

- £4.40 could teach 10 farmers how to plant drought-tolerant crops that can survive the drought.
- £10 could buy a pair of taps at a water point which will be installed at an earth dam, making it easier for people to fetch water.
- £42 could buy 350kg of cement, which is needed to build an earth dam.
- £545 could pay for a skilled labourer to work on the construction of an earth or sand dam.

Every pound raised, every prayer said and every action taken, are expressions of our Christian love and compassion, of our belief that all life is equal and precious in the sight of God. Together, we stop this climate crisis, and give brave, hard-working women like Rose the chance to thrive.

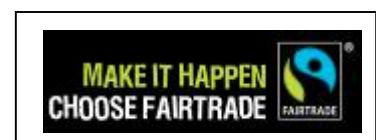
You can also join us as we call on the UK Prime Minister to lead the world with ambitious climate action that will also address inequality (caid.org.uk/climate-justice-petition).

Also, pray with us for a radical change of heart for politicians, and that as a global community we will care for our common home and for people living in poverty.

We can all be part of the solution. All we need is courage and determination.

Stand together with us to fight this climate crisis.

Thank you for your support,



CHRISTIAN AID WEEK 10-16 MAY 2021

Together we STOP this climate crisis

Every envelope - every gift - every challenge can change lives

THE RED ENVELOPE



Much of the week will again have to be 'virtual' but Christian Aid has produced specially designed 'delivery only' envelopes which allow us to stamp, print, label or write on the envelopes to tell supporters where to drop their donation. The drop off points will be our churches and homes.

With delivery only, there's no need to knock on doors to collect so we can cover more homes in Cowley. We're giving that a try – our daily exercise for Christian Aid. Please speak to, phone, text or email Lesley Williams to say you are up for it – and if so, where you would like to deliver – a street(s) or perhaps just 12 immediate neighbours, with the envelopes labelled to be delivered back to you or us.

For online givers, there's a VIRTUAL ENVELOPE which you can create, donate and then share with friends

<https://envelope.christianaid.org.uk/your-e-envelope/add>

There's a national online CAW QUIZTIAN AID - Saturday 8 May 7.00 pm

The fun filled online quiz has returned following its success last year and is suitable for all the family. It will be hosted by special guests Tobi and Prisca Bakare, Rhidian Brook, Kris Marshall, Kate Bottley and Rowan Williams.

Sign up on line for that – free – donations

<https://www.christianaid.org.uk/appeals/key-appeals/christian-aid-week/virtual-events>

PUDDINGS AND POETRY - a Zoom event for Christian Aid Week - Saturday 15 May, 7.00 pm an idea borrowed from our Mothers Union (thank you) but in this case held at home. Bring to your screen a favourite pudding – you will be invited to display and describe and then eat it – and a favourite poem to read out or get it to Lesley in advance to read.

You are asked to donate at least £5 per person who has tuned in, to Christian Aid. We will arrange to collect it from you if you are not coming to church

If regulations allow, we will also have a simple CHRISTIAN AID LUNCH as part of the APCM – Annual Parochial Church Meeting – at 12.00 pm that same day, Saturday 15 May.

If you have any other ideas for PERSONAL FUNDRAISING during Christian Aid Week – a sponsored challenge, make and sell cakes to your family/friends? – please go ahead! and let Lesley know

LATER:

SONG OF THE PROPHETS - Wednesday 9 June, 7.00-8.00

Join virtually to witness the debut performance of a new orchestral work Song of the Prophets: A Requiem for the Climate. There will be an address from Dr Rowan Williams, former Archbishop of Canterbury, and a panel discussion with climate campaigners.

Christian Aid has collaborated with the Chineke! Orchestra - Europe's first majority-BME orchestra - and St Paul's Institute, on the performance of a new piece of music based on Christian Aid's climate change work.

Sign up on line – free – donations

<https://www.christianaid.org.uk/appeals/key-appeals/christian-aid-week/virtual-events>

AND THEN if all goes well and 21 June really is the anticipated full release from C-19 restrictions date, then an end of June QUIZ AID evening may be our first Parish back to reality event!

Please put Friday 25 June, 7.00 pm in your diary NOW! Rosanne Butler is already assembling the questions!

AND THEN as soon as possible, there will be a BIG BREKKIE!

Lesley Williams 01865 779 562 07982 439 828 lesleyjwilliams@btinternet.com

Poem

ODE TO THE SPELL CHECKER

Eye have a spelling checker
It came with my pea sea
It plainly marques four my revue
Miss steaks eye kin knot sea.
Eye strike a key and type a word
And weight 4 it 2 say
Weather eye am wrong oar write
It shows me strait a weigh.
As soon as a mist ache is maid
It nose bee fore two long
And eye can put the error rite
Its rare lea ever wrong.
Eye have run this poem threw it
I am shore your pleased two no
Its letter perfect awl the weigh
My chequer tolled me sew!

May Morning on Magdalen Bridge

Save The Children, make and sell posies
I've heard people say "wish they were roses"
instead of gilly flowers that last for hours,
and from the bridge foolish lads would leap
just as did their dads
Then all mud and wet, will creep
On May morning on Magdalen Bridge.

Choir sings from the tower at six o'clock on
the hour
Madrigals are sung
Church bells ring
Morris men dance
While gargoyles glance
Foolish lads from the bridge will leap
As did their dads
From Magdalen Bridge on May morning.

Gwen Fancutt
(from May 2007)

STUDY ON HEALTH, AGEING AND CARE

I am a research associate at Brookes university working on a study about healthy ageing and care.

The healthy ageing team are exploring the potential of integrating the fast-track home adaptation services for older people into health and social care services. Home adaptations are carried out to make the home environment safer for individuals, which could prevent older people from going into care homes and could facilitate faster discharge from hospitals. Integrating the services could ensure timely home adaptations through the Government's fast track home adaptation grants.

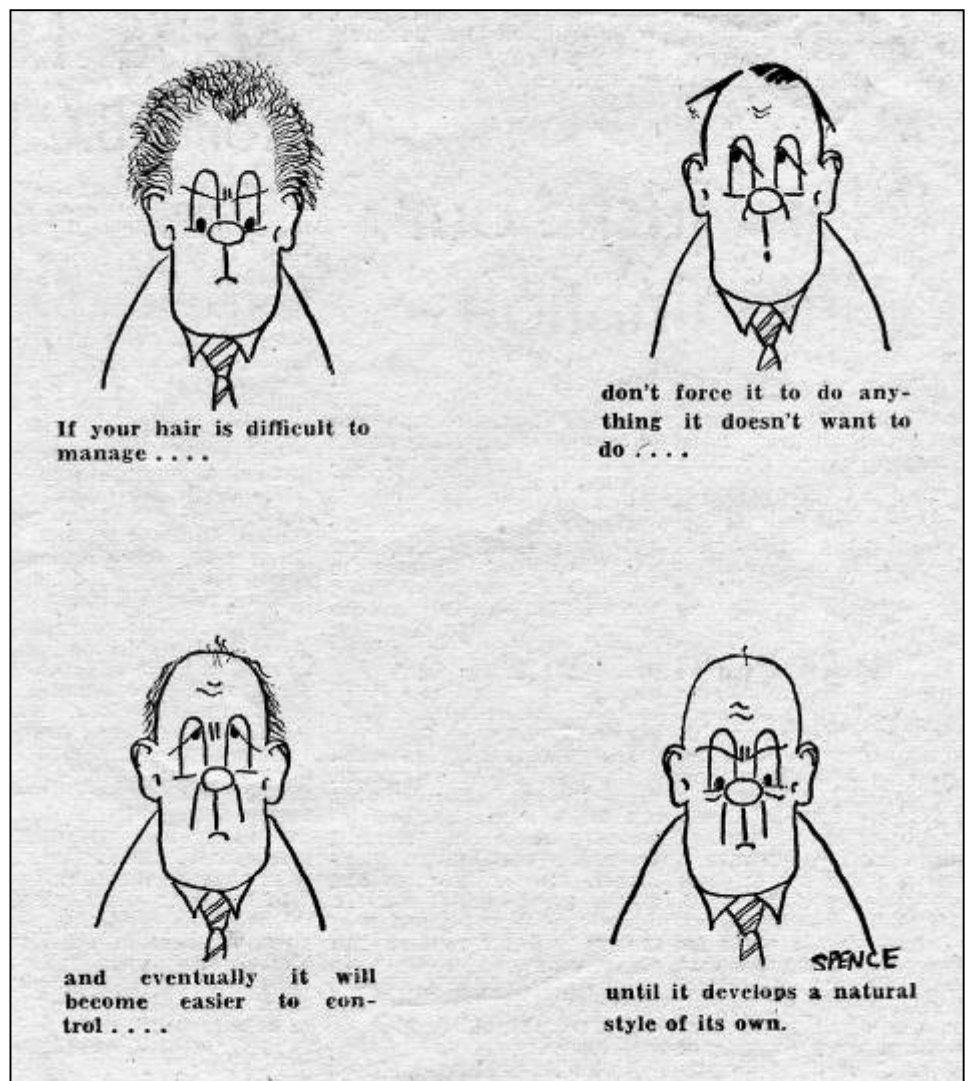
We are looking for people who are 50 years of age or older and who have experience of or views on the home adaptation service. We also want to talk to carers who are helping older people (50+) with chronic illness/disability or have experience of or views on the service for older people.

The study would involve taking part in a virtual workshop with researchers to explore your views on how the home adaptation services could work better for older people.

This workshop will take around one and a half hours and will be through the virtual platform Zoom.

If you are interested please contact Elaine Ulett: EUlett@brookes.ac.uk. A £20 shopping voucher will be given to those who take part in the virtual workshop.

Elaine Ulett



SAFEGUARDING IN COWLEY PARISH

As a Parish, we are committed to the Christian care, nurture of, and respectful pastoral ministry with, all children and all adults but particularly those who are vulnerable in any way.

So we ensure that our policies and practice on the selection and training of all those staff and volunteers with any responsibility within the Church are in line with safer recruitment principles, including the use of Disclosure and Barring Service criminal records checks where applicable.

We intend that St James and St Francis churches will be safe, caring communities which provide a loving environment where there is a culture of 'informed vigilance' as to the dangers of abuse, including domestic violence and bullying.

We will challenge any abuse of power, especially by anyone in a position of trust in our churches.

We follow statute, guidance and recognised good practice in all our safeguarding procedures and check that all users of our premises agree to do so too.

It is now 3 years since we introduced the Diocesan training programme for all those Parish volunteer roles requiring it - and that training must now be refreshed. We hope many of you will be able to follow the courses individually at home on-line but, when C-19 regulations allow later in the year, we will again be offering group training at St James Centre both for the Basic Awareness course, which I can deliver, and Foundation, which requires a Diocesan trainer.

The 'Basic awareness' course (formerly called C0) has been revised and is much more accessible. It is required for all volunteers with person facing roles in our churches but is also open to anyone who thinks they should understand more about what we mean by 'safeguarding' in the church context.

Those involved in any of our children's work and pastoral care must take the 'Safeguarding Foundations' (formerly C1) – also available as an individual online course but which we will later offer in a group session.

All those who require the refreshment should have received an email and attached letter from me with details of how to access the on-line courses; those without e-mail access should have had the letter delivered. I am still awaiting responses from quite a few of the recipients about how they will undertake the training.

Safeguarding is everyone's responsibility – *please be sure to report anything you observe that worries you about someone's safety or wellbeing whilst at church or on-line.*

It is just as important during this strange time part virtual, part reality time; the situation throws up its own safeguarding and welfare issues. Please remain vigilant.

Lesley Williams 01865 779 562 07982 439 828 safeguarding@cowleyteamministry.co.uk

ELECTORAL ROLL – ANNUAL REVISION

It is of course not a full year since the 2020 APCM and electoral roll update – because of Covid-19, last year's APCM was held in October – but for 2021 it's back at its rightful time in the spring – Saturday 15 May, so we are once again reviewing and revising the Parish Electoral Roll.

The roll was 'open' for that revision, including new applications, during April and is now 'closed' until the APCM – but it is available for checking that the information it records, particularly emergency contact details, is accurate. We will welcome new applications following the meeting.

contact Lesley Williams – Electoral Roll Officer

Tel: 01865 779 562

Mobile: 07982 439 828

Email: lesleyjwilliams@btinternet.com

Three small boys were boasting about their fathers.

The first one said, “My Dad scribbles a few words on the back of an envelope, calls it a poem and he gets £50 for it.”

The second boy came back, “Well my Dad scribbles a few words on the back of an envelope, calls it a song and gets paid £100 for it”.

The third one said, with a smile, “My Dad scribbles a few words on the back of an envelope, calls it a sermon and people move amongst the congregation and get platefuls of cash!”

CONTROLLED PARKING ZONES AND RESIDENTIAL CARERS

My RESIDENTIAL CARERS parking certificate allowing a 'visiting carer' up to 3 hours parking free of charge parking, within restricted hours, on my road or adjacent roads if no parking possible. The permit is issued ONLY on application and subject to 'carer' needs. It is issued to a specific address and not to the carer.

With the introduction of the CONTROLLED PARKING ZONES in the Cowley area it is important to understand that these CPN regulations also apply now, in addition to the experimental Low Traffic Neighbourhood (LTN's) scheme. Residents over a certain age may expect a second issue of scratch cards. Further information from parking@oxfordshire.co.uk or 0345-3371138, option 3.

Nonny Muss

COWLEY FESTIVAL OF CHRISTMAS TREES 2021

Sorry to mention the C word so early in the year but we have our first planning meeting for this year's Christmas tree festival on Thursday 6 May, 9.00 am remotely, using Zoom – the coffee morning link from the Parish website. Anyone interested is invited to join us.

We need to decide a zappy title linked to our theme of light and propose any new ideas to spread the festival further into the community.

A WARTIME CHILDHOOD

(Part 9)

If you continued for a few more hundred yards along the lane which led to our cottage, you would pass several more cottages and then it opened up into fields and gravel pits. Throughout World War II, there were situated amongst these fields some huge wire netting 'tents' which were very well camouflaged. These were strictly off-limits, because they contained the bombs used to arm the Halifax, Whitley* and Lancaster bombers stationed at RAF Stanton Harcourt. This aerodrome was only about two miles as the crow flies, from the back of our little house.

As a small girl, I would hear the drone of the aircraft as they flew low over our roof just as I was going to bed. Mummy would tell me to snuggle down and not worry as our brave airmen were setting out on their missions to keep us safe. Sometimes I would wake up in the middle of the night and hear those same aeroplanes returning to their base just a few fields away.

However one night things were very different. I was woken up by a series of huge explosions. As our cottage was in a corner of a field we never needed to draw our bedroom curtains, especially as our only light at bedtime was a candle. So, sitting up in bed on that warm summer night I could see all too clearly an enormous fire over the top of the elm trees only a few yards down the lane. My parents rushed up into my room to see that I was alright and not frightened. No, I was sitting up in bed cuddling my teddy.

On their bombing raids many of our aircraft were damaged by enemy fire and needed to limp back to base. There was a song during the war which reflected that – 'Coming in on

a wing and a prayer'. Sadly, some of the aircraft didn't make it and there, very near to us, was an example of such a tragedy. The fire was so fierce and the explosions were the fuel tanks breaking up. Most of the crew perished except for two who were somehow thrown clear of the crash.

Very near to this crash lived a family with a long garden and at the bottom of this garden was a large pond. When she realised what had happened, the lady of the house jumped out of bed, threw a coat over her nightdress and rushed outside. As she reached the pond, she saw what she thought were two bodies. They were lying face down in the pond. On further investigation they were alive but unconscious and they were drowning. The pond was quite shallow, so working quickly the brave lady got into the water and pulled the two airmen out, thus saving their lives. Her quick-thinking made her (quite rightly) the heroine of the village.

Soon after, the big salvage lorries which were called 'Queen Marys' arrived to take the wreckage of the crashed aeroplane, and the only evidence of the terrible incident was the broken tops of those lovely elm trees.

This was not the only aeroplane crash which the village experienced before the war ended, and each one was a tragedy. It brought home vividly to us children that our brave airmen did not always arrive home safely from their missions.

Rosanne Butler

* Witley bombers from RAF Stanton Harcourt were the first bombers over Berlin during the war. Editor

Maytime is Plant Sale time!

My Giant Sunflower seeds have taken a good two weeks to emerge from the compost. They are in the greenhouse which has great variations of temperature over each 24 hours. If you, too, are growing them to enter our parish competition, I hope you stuck it out waiting for yours to pop up. Maybe, if you had a steady supply of warmth, yours have shown themselves sooner?

If you haven't got involved already, I shall have some seedlings on sale at the Plant sale. All, of course, sown on Easter Sunday, as per the rules!

I have been very busy pricking out, potting on and nurturing in readiness for May 22nd. The banner has been changed to the correct date and posters have been produced. The plans at present are to use the far end of the Church Centre car park. We shall need quite a few helpers to marshal any queue and ensure social-distancing as well as people to answer questions and take money. We shall have the card machine for contactless card payments. I think it would be a good idea for helpers to wear some hi-vis, so if anyone can lend us anything like that, it would be great - or bring your own if you are helping. We are open from 10am until 1pm.

Also please come bringing any plants to add to the sale! Setting up will be from 8am and then we will have to clear any parked vehicles from the area ready for 10 o'clock. I just hope that the weather will be kind on the day. There will be a raffle and cake sale as usual and we will be able to offer refreshments on a table service basis in the (well-ventilated) hall. Contact me

with offers of help and if you have any queries. ojcoleman@btinternet.com or mobile 07935 963 634.

Work in the garden and greenhouse has been busy and we have to get going on the allotment. The broad beans and peas are up and all the seed potatoes are in. All onion and shallot sets and seeds of parsnips, beetroot, lettuce and the like are sown. April has been a very dry and cool month so getting the whole plot dug over by my Other Half has been completed but with complaints of hard going! It was difficult to push in the poles for the runner bean row too and we hope for gentle breezes rather than gale force winds so they can stay upright for the growing season. The runner beans have been sown two per pole just a day or two earlier than my family tradition of sowing on May Day.

April has also had a few frosts so, when one is forecast, I have been covering seedlings with fleece and newspaper. The Daily Telegraph is particularly good as it is the only one now composed of large pages! I am hoping we won't have many more frosts as I want to begin putting the least tender plants in the open out from the greenhouse, which is bulging at the seams!

Looking forward to seeing lots of people on May 22nd. We start at 10 am to finish by 1pm and all proceeds go towards the Flush Fund. Maybe we shall see work starting soon on getting the toilet in St. James' Church!

Joan Coleman

LIVE SIMPLY

“Live Simply So That Others May Simply Live”

Many years ago these words were, I think, the headline for a Christian Aid campaign, and were often quoted by my Mum so they have really stuck with me.

How can we live more simply? We can try to opt out of the “Consumer Society”. We can try not to be so wasteful – think before we buy ANYTHING and ask ourselves, “Do I really, really need this?” or “Can I re-use what I’ve got?” or “Can I make do and mend” which was a phrase often used by my grandparents!

I still find the 3Rs very apt

Reduce
Re-Use
Recycle

One of the benefits of the various lockdowns is that we’ve been able to wear virtually what we want and not feel we have to “dress up”.

It’s been good just wearing out older clothes (ready for the Charity Shops rag-bag recycling), or am I the only one who has been glad to doss around in old things??!

May we all give even more generously to Christian Aid this year if our bank balances have benefitted from less lockdown spending.

Ruth Goodwin



Plant Sale

Saturday 22nd May
10am -12 noon

St James Church Centre
Car park – Covid safe
Beauchamp Lane
Cowley
OX4 3LF



CHRONICLE

Editorial Team- Sally Hemsworth, Nicki Stevens

Deadline for the next edition:
Monday 24 May 2021

If possible, please send entries by email to Sally at

chronicle@cowleyteamministry.co.uk.

Paper contributions should be left at Parish Office for the attention of Sally.

The Editorial Committee in no way accepts responsibility for goods or services supplied by our advertisers, errors and omissions excepted.

Una's Corner

There was an error in an earlier article. When the Rev. G. Moore met my grandmother in Cowley for the first time he said to my 15 year old mother "Hello, what's your name? "Will you come out on the river with me tonight?"

In the articles recently there was something from Reg H. Smith – He was my father. Reginald was a popular name for men, and my father-in-law was also Reg. There was another Reg Smith in St. James' which is why my father used his middle initial.

In the archive, mention was made of Stephen Johnson and his sister Margaret who lived in Crescent Road. 'Stephen' was known as 'Stivvy' and his sister Maggie kept house for him. They were very well-known and respected in Cowley.

When we were married in St. James' in 1959, Father Whye officiated. As I signed the register in the vestry which is now St. Luke's Chapel, Father Whye said in his stentorian voice "Well that's one good thing. That's one less Smith in the world!" He had forgotten that in July that year he had to conduct my brother's marriage thereby making another Smith!

It was a glorious summer in 1959 and the sun came out in April and stayed out until September, so both weddings were in beautiful weather. My brother was married in the morning but my grandmother and my younger brother (who was best-man in his school uniform) suffered from the heat.

At the reception, the bride's father rose to his feet and made his speech. I can't remember word-for-word, but it was something like this;

"Ladies and Gentlemen, when I was a boy I lived with my uncle 'Stivvy' and my auntie Maggie in Crescent Road. My aunt had a crippled leg from a childhood fall and got around very quickly on one crutch. One evening there was a knock on the door and my uncle went to answer. He came back with a gentleman and said to my aunt, "This is Mr. Thomas. He used to work at Vauxhall Motors in Luton. He was made *redundant* before such a word was invented and came to Oxford looking for work at Morris Motors. He has left his wife and family in Luton, so is looking for somewhere to stay weekdays. His workmates have sent him to us."

I know that we sometimes had people to stay. Mr. Thomas said to my aunt that he intended to cycle home every Friday evening and cycle back to Oxford every Sunday evening. Aunt Maggie said yes, he could have a room weekdays!

That is how I first met Mr. Thomas, he was a real gentleman and he sometimes used to get down on the floor with me to play. About a year later, Mr. Thomas announced that he had bought a house in Garsington Road. He brought his wife, baby son and teenage daughter to see us.

Many years later his house was demolished to make way for the Retail Park and by that time he had moved to a bigger, newer house. I remember he told me that he was a 'Coach Painter' and explained that meant he painted cars by hand, each car having 12 coats of paint. The cars could be any colour, as long as they were black! Later he became foreman of that very first paint shop.

He continued: "This morning you heard me give my only daughter in marriage to Mr. Thomas' eldest grandson and I'm happy to tell you he is sitting over there with his family."

He waved an arm across to where we were sitting. Grandpa raised his in acknowledgement and smiled as a murmuring and smattering of claps spread over the gathering.

Una

ANNUAL PARISH MEETING AND ANNUAL PAROCHIAL CHURCH MEETING

These meetings will be held at St James Church Centre and by ZOOM on Saturday, 15 May 2021, commencing at 12 noon.

Church Wardens are appointed at the Annual Parish Meeting – Chris Woodman is willing to be nominated for St James Church. However, Nick Dewey will not be standing for St Francis Church and nominations are required for this position. It is not a difficult or scary job and lots of help will be given to anyone who is appointed.

Deanery Synod Representatives are appointed at the Annual Parochial Church Meeting – at the last meeting the following three people were appointed:

Nick Dewey

Chris Lee

Chris Woodman

Unfortunately, it has been necessary for Nick Dewey to stand down, and nominations are required for this position.

Nomination forms will be in church for both Church Warden positions and for the Deanery Synod vacancy and are also available from me.

Please do not hesitate to contact Geoff for more information on these positions.

Sally Hemsworth



TRAIDCRAFT Exchange

CAMINO DE SANTIAGO for Traidcraft Exchange <https://traidcraftexchange.org/what-we-do>

As previously announced several times, so everyone should now know, I'm signed up to join a group walking the final 115km of the full 772 km Camino, from Sarria to Santiago de Compostela in north west Spain, over 5 days, hopefully in the first week of October.

We are in training and fundraising mode; Traidcraft Exchange set up a fundraising virtual walk for anyone accepting the challenge to walk 100km during April – the walking/ running has been real, logged on Strava or another similar app; it was virtual in that none of us was in northern Spain but scattered across the UK - and others joined the challenge around the world!

As I was already walking far more than 100 km (62 miles) a month, I set my personal target to 320km (200 miles) and then, having reached that on Saturday 24 April, added another 50 miles for the last 6 days and trust I will be able to announce completion in 2 May's Link 402 km (250 miles).

On day 24's evening walk, I'd been at Hill End all day for morning and afternoon family bushcraft sessions and already logged 5.33 miles there, leaving just 6.65 to reach the 200.

my mind said *'let's finish it this evening'*
my legs said *'I'd really rather not'*
mind said *'you know you can'*
legs said *'mm, it would be nice to finish on a Sunday'*
mind said *'but you could start an extra 50 on Sunday'*
legs said *'really? are you joking? oh,ok, but slowly'*
at 6.15 miles, phone said *'sorry folks but my battery is flat'*

so the final half mile was later, after a battery recharge – I think that was the hardest of the whole 200!

Very happily, I've also been able to increase my fundraising target for this particular challenge from £500 to £750, delighted that donations are being doubled by the Government through UK Aid until 7 June. THANK YOU to those who have already contributed.

I will be continuing to fundraise in other ways over the summer, anticipating some coffee and cake mornings when we are allowed, to make up for all those we have missed over the last year.

TRAIDCRAFT EXCHANGE brings people together to fight injustice in trade and help protect the world's poorest communities from the impact of climate change. It's their mission to use the

power of trade, rather than aid, to create lasting solutions to poverty. They are the partner charity of Traidcraft, the fair trade company.

The specific project this '100 km in April' is supporting is the 'Regenerators Appeal' which is working with those struggling on the front line in the fight against climate change. <https://traidcraftexchange.org/regenerators>

Climate change is happening right now, and it's hitting the most vulnerable peoples of the world the hardest. Regenerators tackle the climate crisis face on and help build a better, greener world for everyone, despite all the obstacles.

By investing in climate smart technology, like solar panels and irrigation systems, alongside planting trees and developing new crops which can face the new conditions, those on the frontline of the climate crisis can protect their homes and incomes.

There are three ways of donating to my sponsorship:

- (1) through my Facebook giving page <https://www.facebook.com/donate/252363499818620/10218647109636043/>

Facebook pays all the processing fees for you, so 100% of your donation goes directly to the charity and my total

- (2) if you don't use/like Facebook, you can still give on line at <https://traidcraftexchange.org.uk/100km-in-april> but please then let me know so the amount can be added to my fundraising total.
- (3) if you don't do online giving at all, I have a standard paper sponsor form but if you are not coming to church yet, let me know by phone what you wish to donate and whether you can gift aid it - and I can arrange to collect cash or a cheque from you at home – walking of course!

However you are able to support me, thank you!

lesleyjwilliams@btinternet.com 07982 439 828 01865 779 562

Book Review

"Lady in Waiting by Lady Anne Glenconner

For anyone who is intrigued by the aristocracy this is a very good read. Anne Glenconner was born into a very prestigious family. She was a bridesmaid to the Queen and became a very close friend of Princess Margaret and later became her Lady in Waiting. She had a very turbulent marriage to Colin Tenant which lasted for 54 years. They had five children, three sons and two daughters and her years with him were very strange to say the least. During all this time Princess Margaret was a very loyal friend to her and was very understanding when life was causing Anne a great deal of distress. Colin Tenant purchased the Island of Mustique and gave it to Princess Margaret and spent much of his life there.

Chris Woodman

THY KINGDOM COME

Thursday 13 – Sunday 23 May 2021

<https://www.thykingdomcome.global/about-us>

Thy Kingdom Come is a global prayer movement that invites Christians around the world to pray Ascension to Pentecost for more people to come to know Jesus. What started in 2016 as an invitation from the Archbishops of Canterbury and York to the Church of England has grown into an international and ecumenical call to prayer.

Since its start in May 2016 God has grown Thy Kingdom Come from a dream of possibility into a movement. Christians from 172 countries have taken part in praying 'Come Holy Spirit', so that friends and family, neighbours and colleagues might come to faith in Jesus Christ.

This praying together has been across our diversity and differences as every person, household and church are encouraged to pray in their own way. According to our annual survey findings an astonishing percentage of people said they were praying for family and friends to come to faith in Jesus, and a significant number of people join in for the first time, we recognise there is much more we can do together to help *Thy Kingdom Come* be fully in the life-blood of the Church.

During the 11 days of Thy Kingdom Come, it is hoped that everyone who takes part will:

deepen their own relationship with Jesus Christ

pray for 5 friends or family to come to faith in Jesus

pray for the empowerment of the Spirit that we would be effective in our witness

After the very first Ascension Day, the disciples gathered with Mary, constantly devoting themselves to prayer while they waited for the outpouring of the Holy Spirit at Pentecost. Like them, our reliance on the gift of the Holy Spirit is total – on our own we can do nothing.

Through the centuries Christians have gathered at that time to pray for the coming of the Holy Spirit. 'Thy Kingdom Come' picks up this tradition. Over the years more and more worshipping communities have dedicated the days between Ascension and Pentecost to pray 'Come Holy Spirit'.

We are praying that the Spirit will inspire and equip us to share the Good News of Jesus Christ with our friends and families, our communities and networks. It has been amazing how many varied ways there have been in which people from every tradition have taken up this challenge. The effects have been remarkable.

It is our prayer that those who have not yet heard the Good News of Jesus Christ and his love for the world will hear it for themselves, and respond and follow Him. Specifically, we again invite each and every Christian across the globe to pray that God's Spirit might work in the lives of 5 friends who have not responded with their 'Yes' to God's call.

Whether you have joined in 'Thy Kingdom Come' before or not, we invite you to take part – along with churches from over 80 different denominations & traditions in nearly 90% of countries (172) around the world.

"In praying 'Thy Kingdom Come' we all commit to playing our part in the renewal of the nations and the transformation of communities." Archbishop Justin Welby

THE PARISH HOLIDAY – a new message from Pat Chambers

Gordon and I have had another chat; he says that sadly coach parties are not being welcomed at his hotels for this year at all - only private visitors.

But he has secured 19-23 April 2022 in Weymouth – the same hotel, 4 nights Monday to Friday, at the same cost, £398 per person for all.

There are only 12 single rooms; the others are double and twin.

We of course need some commitment RIGHT NOW.

Contact me Pat 01235 799 717 or Brian on 07929 879 104. We are very happy to help anyone who is interested.

We are also looking at the possibility of organising a day coach trip this summer, which may feel safer for folk.

Once again, there is a need to register interest as soon as we have details.

SUPPORT PHONE NUMBERS

NEEDING ADVICE OR HELP? or just want to talk?

SOME USEFUL LOCAL NUMBERS:

Citizens Advice:	08082 787 909
Oxford City Council:	01865 249 811
Oxfordshire Mind:	01865 247788
Red Cross <i>coronavirus support line</i> :	08081 963 651
Samaritans <i>available 24/7</i> :	116 123
The Archway Foundation:	01865 790 552
Mental Health helpline <i>available 24/7</i> - NHS Oxford Health:	
Adults:	01865 904 997
Children/young people:	01865 904 988
Age UK—new telephone service for older people	01865 411288

Have you been receiving a lot of scam calls on your phone, some of them quite scary? If you are concerned about them, you can obtain help by:

- phoning 03450 700 707 – that's a special department set up by the police *OR*
- Silver Lines, open 24 hrs for assistance on 08004 708 090 - this is a charity set up by Esther Rantzen, primarily to assist those elderly people in need of assistance and who live alone and are in fear of being abused.

JOHN SHREEVE'S ARTICLES

Whilst looking through the Chronicle archives, I thought it would be good to have a series on the articles which the late John Shreeve wrote over past years. He was a stalwart and kept the Chronicle going with his excellent writings which were all very interesting and most of them quite topical.

Les Hemsworth

The Binsey Treacle Mines

October 2007

When I was a young lad in Oxford many moons ago, there used to be a standard joke going around. Someone would say 'Where are you going now then?' And the answer would be 'I'm off to Binsey to visit the Treacle Mines'. A piece of nonsense, you will say, everyone knows that you can't get treacle from a hole in the ground. And so I thought for many years. It never occurred to me to ask the questions - Why Binsey? - Why treacle?

Thus quite recently, when I was doing some research into something else, quite by chance I came across the answer. People *did indeed* go to Binsey to get treacle, not just a few, but *thousands* of them! And they did find it in a hole in the ground, not in a mineshaft but in a well-shaft. For treacle was the name for Holy Water, and there was a famous Holy Well at Binsey: and since it concerns the church, faith and miracles, it seemed to me that it might be of some interest. And thereby hangs a tale:

Binsey was an important village in medieval times and has significant religious connotations. Not many people visit it now unless they are going to 'The Perch' pub, by the river Thames. The village of Binsey, or Byni, as it was then called, was an island, and approached by a causeway. The land it was built on belonged to Didan, the father of our Patron Saint, St. Frideswide, and she came there to escape from the unwelcome attention of her Danish suitor, Algar.

At Binsey she built a church dedicated to St. Margaret, and at the west end is the Holy Well of St. Margaret, which gushed forth miraculously in answer to her prayers. This spring had such marvellous powers of healing that sufferers who obtained no relief at the shrine of St. Thomas of Canterbury, were cured at Binsey. So highly was the water esteemed that it sold for a guinea a quart, and a stone house was built over the well and the door kept locked to prevent illicit traffic. Even after the bones of St. Frideswide had been moved to Oxford in 1180, Binsey remained a centre for pilgrimage and hostels were built near the church to accommodate the numerous pilgrims.

The church is still there so you can see the well. Why not pay a visit and add your own prayers to those who have gone before us?

What intrigues me, and you may wonder too, is how the grains of truth that have lingered on in the form of facetious folklore, right to our present times. That in itself is a modern miracle!

From the Archives

FEBRUARY 2016

Installation of Solar Panels

Some of you may have noticed we have installed an array of solar panels via I.Q. Energy on the St James Church Centre roof. In fact there are 39 panels and it has taken 2 years in the planning before coming to fruition. We just managed to get it in at the end of 2015 when the Government were due to halve the feed in tariffs!



So now we can make use of the sun's energy to generate electricity and over time perhaps 7 years we should have paid off our investment and receive an income. We benefit from a feed in tariff, an export tariff, an offset in electricity used at a given time while it is generating and also the hot water tank can be heated from any excess! The system cost £14,000 but this has come from a capital account that could only be used on the Church Centre which is separate from our scarce Church funds. So far over a month of dull grey weather we have generated 180kw but we expect this to increase a lot over the spring and summer.

We will keep you informed from time to time to let you know how it is doing.

Dave Stanley
Churchwarden

April 2021 – Update on Solar Panels:

£5154 is the current total which has been paid to the Church Centre account by the electricity company in respect of the solar panels.

Editor

OXFORD WINTER NIGHT SHELTER

Last month there was an article on the Oxford Winter Night Shelter (OWNS). The following gives more background information about OWNS:



OWNS was set up in 2018 to provide overnight accommodation to rough sleepers of Oxford during the coldest months of the year, January to March, through accessing church venues across central Oxford. The church venues are provided free of charge and comprise a mixture of church buildings and community spaces.

During the first year of operation in 2018, OWNS provided overnight accommodation to up to 10 guests across 7 different venues, a different venue for each night of the week. The following year, in response to the growing need and building on the experience from the first year, the operation increased by providing up to 20 beds each night for the winter months spread over 12 separate venues, with up to 10 guests in each venue, who moved to a different venue each night. The same level of accommodation was provided in 2020, with the addition of The Morning Club at the Gatehouse venue, where guests were able to have breakfast and a shower.

During the first three years of its operations, OWNS has developed a good working relationship with the statutory bodies and other charities working in the same field. This has enabled OWNS to obtain a better understanding of the needs of the homeless. OWNS has developed a strong and highly-regarded trained volunteer base, without which the operation would not exist. It has developed links and relationships with churches and other organisations across Oxford, in addition to the venue churches, who provide support, both financially and practically. OWNS has become a well-regarded, established service provider in Oxford in a short period of time.

The Coronavirus pandemic has prevented OWNS carrying out the activities for which it is traditionally known, however, The Living Room will enable OWNS to serve its client group, through a different route.

OWNS is financed through a combination of giving by individual donors, churches and other organisations and grants and to a limited extent through events organised by OWNS, which have the dual purpose of raising awareness. During the pandemic, some of the traditional methods of fund raising, for example church carol services, have not been available. The venues for running the overnight accommodation are provided essentially free of charge.

St Clement's Parish Property

St Clement's Parish Property is a small charity established in 1903 to use its properties to support the "spiritual, intellectual, moral or social wants" of the parishioners of St Clement's Parish, East Oxford.

Its mission statement is: *To offer a visible practical expression of Jesus' presence in the local community with a vision to see a flourishing, hospitable local community, attentive to the least, the lost and lonely. The Trust's values, inspired by the example of Jesus Christ, are to be generous, hospitable, servant-hearted, visible and accessible, and in all things to work to build community for now and the future.*

St Clement's Parish Property owns The St Clement's Centre on Cross Street, The Old Mission Hall

Building on St Clement's Street and 12A Morrell Avenue. The buildings currently provide a mix of residential and commercial accommodation, space for community activities, including activities run by St Clement's Church.

FAQ about The Living Room

Q1. How many days a week will the Living Room be open?

A1. Initially it will be open three days a week, including one day during the weekend. In time, if there is a need and there are sufficient resources, then this will increase.

Q2. What will the hours of operation be? Is there likely to be a queue of guests outside the building, waiting to come in?

A2. The Living Room will be open during business hours only. Guests will be referred from known agencies and will be booked in for a set session. It is not a drop in.

Q3. What benefits do you expect the guests to get from visiting the Living Room?

A3. To gain some respite from the relentless pressure from living on the streets and to regain a sense of dignity through the offering of a warm place to rest, the provision of shower and clothes washing facilities, access to computers and the opportunity to chat to a member of staff.

Q4. Will you run the overnight accommodation on the premises?

A4. No, we will open the night shelter programme as soon as we are able to do so but this will be at other venues, using the existing church network.

Q5. If accommodation is provided under the Everyone In initiative, is there really a need for this and are you not just doubling up what other agencies and charities in Oxford are already providing?

A5. This project came about through discussions with a number of agencies and organisations who confirmed that there was a real need for additional support and a different approach in order to serve those harder to reach. We will continue to work alongside these agencies in order to serve this part of the community in the most effective way possible.

Q6. When you start running the night shelters again, will you close the Living Room?

A6. No, the Living Room will continue to operate and will complement the night shelter operations as and when they can operate. We have entered into a long term arrangement with St Clement's Parish Property and we are committed to this project.

Q7. Who will be responsible for the day to day running of the Living Room?

A.7. The Oxford Winter Night Shelter is to employ a suitably qualified manager who will be responsible for ensuring the effective and safe management of the Living Room. We will also be seeking volunteers from our existing database of experienced volunteers to assist the manager during the session.

Q8. Will you still open and operate while there is still a national pandemic?

A8. We will only open and operate if it is legal and safe to do so. The safety of our staff and the guests is paramount.

Q9. Are you not doing something which should be provided by the City Council?

A9. The Oxford City Council are reviewing all day services within the city to ensure appropriate services are available to people experiencing homelessness once Government restrictions have been lifted.

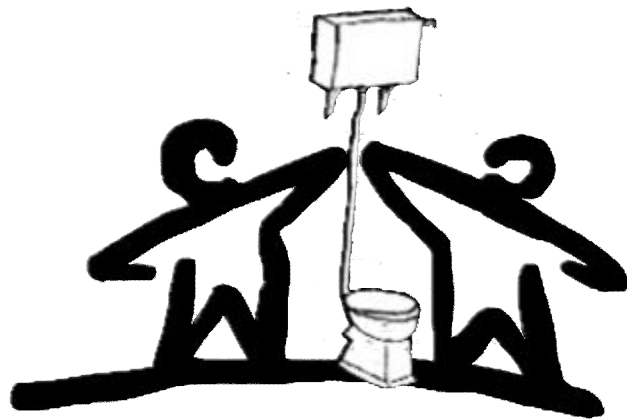
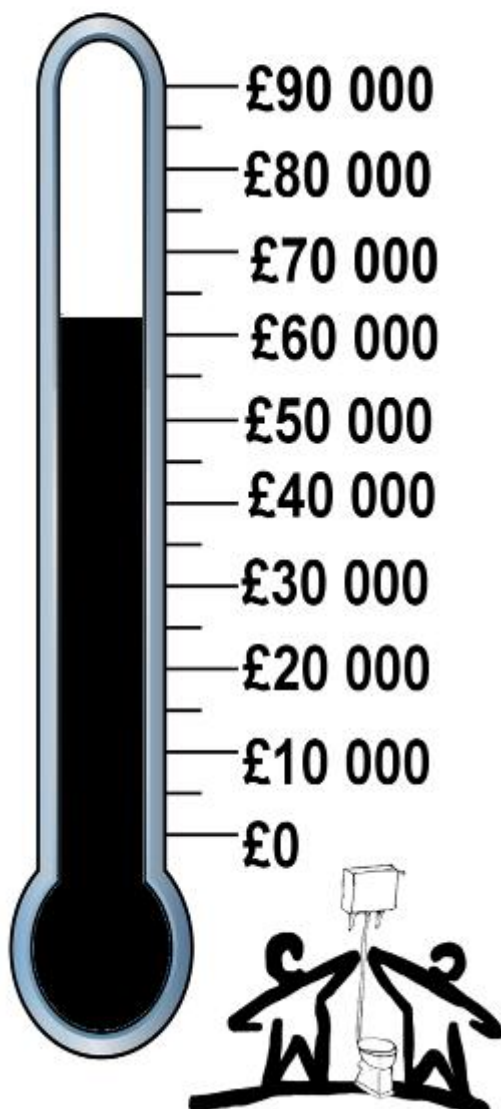
Q10. How are you managing to fund this operation?

A10. The set up costs of such an operation are fairly significant. We have been able to secure a number of grants from local and national charities and also have been supported by local church and other communities. The ongoing costs are being met through the generosity of St Clement's Parish Property in terms of the premises, the continued support of our donor base and the many volunteers who give their time freely.

Q11 How do I find out more information?

A11. You can visit the website, www.ownsoxford.org.uk or by emailing info@ownsoxford.org.uk.

St James' Toilet and Audio-Visual Project Fund raising



St James' Toilet and Audio-Visual Project. We have had long awaited plans to bring St James Church into the 21st century by the introduction of a toilet and by making permanent the projection facilities. We are delighted to be able to tell you that we have both permission from the Church planning authority (a faculty from the DAC) and some quotes for the work. We now know the total cost of the project will be in the region of £96,000. We already have £62,000 committed to the work. That will be enough to start but not finish! We are on the last leg and need to raise the final £34,000. It will be a big venture, but I am confident that with the guidance of Jesus, alongside the generosity and ingenuity of God's people we will be able to reach the goal. So do please pray, consider what routes we might take forward and ask the Lord if you may be able to offer some financial support to this worthy project. Yours in faith Geoff



ADAPTED FROM AN ARTICLE BY —WIL POUNDS

You see the symbol of the fish all the time on cars, lapel pins, jewellery, etc. What does the fish represent? This year it appears in the artwork on our Easter Candles. John Booty a congregation member painted the candles for us!



Because of the intense persecution early believers faced, when two complete strangers met they would be hesitant to reveal their faith. After a few minutes of conversation, one of them would take his foot and draw an arc on the ground. If the other person were a Christian, he would take his foot or finger and draw another arc, completing the symbol of the

fish. Then they would take turns putting the five Greek letters IXOUS (ΙΧΘΥΣ) inside the fish. This word is pronounced "ichthus," and is the normal word used in the Gospels for "fish" (Matthew 7:10, 14:17, etc.).

Why a fish? The early Christians gave the Greek word for "fish" a hidden meaning, because its letters form an acrostic proclaiming many of the great truths of Christianity.

I represents Iesous (Ιησους), which is the Greek word for "Jesus". An angel of the Lord appeared to Joseph and told him that his fiancée Mary "shall bring forth a son, and thou shalt call His name JESUS: for He shall save His people from their sins" (Matthew 1:21). The Hebrew form of His name is Jehoshua, meaning "Jehovah saves".

X stands for Xristos (Χριστος), or "Christ," meaning "anointed". Jesus is God's "Anointed One". When Jesus was born, the angels announced Him to the shepherds as "Christ the Lord" (Luke 2:11). Peter declared, "Thou art the Christ, the Son of the living God" (Matthew 16:16). The Hebrew form of "Christ" is "Messiah."

Θ stands for Theos (Θεου) which is translated "God". Jesus the Messiah is none other than the eternal God revealed in human flesh (John 1:1-3; Colossians 1:15-20; 2:9). In Paul's letter to Titus, he proclaims the divinity of Jesus Christ: "the great God and our Saviour Jesus Christ" (Titus 2:13).

Υ represents Uios (Υιος) which means "Son". Jesus is "the only begotten Son" of God (John 3:16)". God ... hath in these last days spoken unto us by His Son, whom He hath appointed heir of all things, by whom also He made the worlds; who being the brightness of His glory, and the express image of His person, and upholding all things by the word of His power, when He had by Himself purged our sins, sat down on the right hand of the Majesty on high;" (Hebrews 1:1-3).

Σ stands for Soter (Σωτηρ), meaning "Saviour". "For unto you is born this day in the city of

David a Saviour, which is Christ the Lord" (Luke 2:11). He is the promised "Saviour of the world" (John 4:42). The idea is deliverance, a saving from disaster, rescue from a hopeless situation, and breaking the chains of bondage. Indeed, the Bible tells us, "Neither is there salvation in any other: for there is none other name under heaven given among men, whereby we must be saved." (Acts 4:12).

The next time you see the sign of the fish, remember that Jesus is the Christ, the very Son of God, who gave His life as a sacrifice in order to be our Saviour. Have you put your trust in Him to save you for all eternity?



ACKACS LTD
Accounting Consultancy Services

Accountancy & Taxation Service tailored to your need
We help complete, return & minimise clients Tax Bills.

SERVICES
SMALL & MEDIUM SIZE BUSINESS & INDIVIDUALS

Accountancy & Bookkeeping
Company Accounts, CT Return & Payroll
Taxation Specialist - VAT, Income Tax, CGT & IHT
Self Assessment - file your Tax from just £100

AUGUSTINE KANU MAAT, MBA, BA(HONS)

For a prompt & friendly advice or a free consultation:
13 The Slade Headington Oxford. OX3 7HL
Tel: 01865594733 Mob. 07775678658
Email: info@ackacs.co.uk www.ackacs.co.uk

aat Augustine Kanu is licensed and regulated
by the AAT under licence number 1000198.



ACKACS LTD Company No. 09250067 Reg in England. VAT No. 197312784
contact or visit us at: www.ackacs.co.uk

Personally Speaking

Big 0 birthdays

- Many happy birthday wishes to Mark Oxbrow who will reach a significant milestone on 11 May.
- We missed congratulating Chris Rumble and Catherine Sutherland, who both reached an even bigger one on 4 January and 13 April respectively.
- And Elivena Gahfoor who attained a half century on 6 March. Happy birthday, albeit belatedly, to you all!

Jeremy Herklots RIP:

Some of you will remember Jeremy and Rosemary Herklots, who worshipped with us a few years ago, before moving to Headington. Jeremy was Church Warden for a short while and had a role at the Emmanuel Christian School at Littlemore.

Lesley Williams met Rosemary a couple of weeks ago when on steward duty at Headington Market in Quarry Hollow park and learned that Jeremy died in early January. Their two sons live nearby – Phil is the Pastor at the Cornerstone Church, Headington Quarry - and are being very supportive. She sends greetings to those who remember her.

ADVERTS FROM OLD COWLEY CHRONICLE

BOY DIRECT FROM THE GROWER—

J. C. Johnson & Son Florists, **GARSINGTON, OXFORD.**

HERBACEOUS and BEDDING PLANTS
A SPECIALITY.

CUT FLOWERS ALWAYS AVAILABLE

WREATHS, CROSSES, BOUQUETS, ETC.,
AT LOWEST PRICES
DELIVERED AT THE SHORTEST NOTICE

TELEPHONE: GARSINGTON 49.

May 1938

M. GUMBRILL, Ladies' & Gent's Hairdresser

135 HOLLOW WAY, COWLEY, OXFORD

Phone 7311

CHARGES FOR LADIES' SALOON.

HAIRCUTTING	9d.	MARCEL WAVING	1/3 and 1/3
" (Children)	5d.	SETTING	1/8
SHINGLING (from long hair)	1/6	SHAMPOO AND SETTING	2/6
BOBBING (from long hair)	1/6		

PERMANENT WAVING: Full Head, Eugene or Cadex P.S.F., £1/1/0; Other Systems, 15/-
(Mornings 12/6) and 10/6. ENDS from 10/-

GENTLEMEN'S SERVICE AT THE USUAL POPULAR PRICES.

HOURS OF BUSINESS: Mon., Tues., Wed. and Fri., 8.30 to 7 p.m. Thurs., 8.30 to 1 p.m.
Sat., 8.30 to 7.30 p.m.

April 1940

CHURCHES OPENING FOR WORSHIP from 6 December

Holy Communion in one kind only

8.00am St James Holy Communion

10.00am Sunday Worship—*recorded—access from website*

10.00am St Francis Holy Communion

PRIVATE PRAYER IN ST JAMES CHURCH

Wednesday 2.00—4.00 St James

**ALL OTHER ACTIVITIES
SUSPENDED UNTIL FURTHER
NOTICE—FACEBOOK DAILY
PRAYER TAKES PLACE
MONDAY—SATURDAY 12
NOON,**

**LOCAL PROGRAMME NOT OPERATING AT MOMENT—
LOOK OUT FOR ANNOUNCEMENTS**

SUNDAY SERVICES

ST JAMES CHURCH, BEAUCHAMP LANE

8.00am Holy Communion
10.00am Sung Eucharist
1.45pm Anglican Asian Living Church
Sunday Lunch – the date varies so watch for notices

ST FRANCIS CHURCH, HOLLOW WAY

MID-WEEK SERVICES & MEETINGS

Morning Prayer	8.00am	Tue, Thu, Sat at St James; Mon at St Francis
Monday	10.00-11.30am	Little Stars Playgroup— St Francis
	2.30pm	Parish Mothers' Union— St James (3rd Monday)
Tuesday	10.00am	Seashells Toddler Group— St James
	12.00pm	Eucharist—Ranklin Room, St James Church Centre
	12.30pm	Tuesday Lunch Club— St James
Thursday	7.30pm	Local House of Prayer, St James

HOME GROUPS

Leader	Time/Venue
Friends of St Francis (Katherine Reed)	2nd & 4th Tuesday afternoons at 2.30pm St Francis Church
Geoff Bayliss	Alternate Wednesdays at 10am St James Church Centre, Ranklin Room
Mark Oxbrow	Alternate Wednesday evenings at 7.30pm Mark's home, 13 Annesley Road (just behind the Rose Hill Coop). Enquiries to Mark at 01865 461953
Rosanne Butler	Alternate Thursday mornings at 10.00am St James Church Centre, Ranklin Room

The Parish Office in St James Church Centre is staffed by volunteers and is not covered continually. Please leave a message and someone will get back to you.

Contact details: Tel: 01865 747680
Email: office@cowleyteamministry.co.uk
Out of hours tel: 01865 778596
Website: www.cowleyteamministry.co.uk

Team Rector:

The Revd Canon Dr Geoffrey Bayliss
Tel: 01865 747680 (o) 01865 778596 (h)
Email: rector@cowleyteamministry.co.uk

Team Curate:

Revd Gemma Beesley
Email: curate@cowleyteamministry.co.uk

Self-supporting Ministers

Revd Canon Mark Oxbrow
01865 461953
Email: markoxbrow@aol.com

Churchwardens:

Christine Woodman Tel: 778078
St Francis : Vacant

St James Church Centre Manager:

Chris Woodman Tel: 778078

Hall Bookings:

St James Church Centre, St James Church, St Francis Church: Please contact the Parish Office Tel: 747680

Cowley Chronicle—Editorial Team:

Sally Hemsworth, Nicki Stevens
Articles to be emailed to:
chronicle@cowleyteamministry.co.uk
Paper contributions to the Parish Office.